

SARS-CoV-2 Spike S1 (Lambda C.37) Protein

Cat. No. LCS-VM1S1

Description

Source	Recombinant SARS-CoV-2 Spike S1 (Lambda C.37) Protein is expressed from HEK293 with His tag at the C-Terminus. It contains Gln14-Arg683(G75V, T76I, R246N, 247-253 del, L452Q, F490S, D614G).
Accession	QHD43416.1
Molecular Weight	The protein has a predicted MW of 75.28 kDa. Due to glycosylation, the protein migrates to 100-120 kDa based on Tris-Bis PAGE result.
Endotoxin	Less than 1EU per µg by the LAL method.
Purity	> 95% as determined by Tris-Bis PAGE > 95% as determined by HPLC

Formulation and Storage

Formulation	Lyophilized from 0.22µm filtered solution in PBS (pH 7.4). Normally 8% trehalose is added as protectant before lyophilization.
Reconstitution	Centrifuge the tube before opening. Reconstituting to a concentration more than 100 µg/ml is recommended. Dissolve the lyophilized protein in distilled water.
Storage	-20 to -80°C for 12 months as supplied from date of receipt. -20 to -80°C for 3-6 months in unopened state after reconstitution. 2-8°C for 2-7 days after reconstitution. Recommend to aliquot the protein into smaller quantities for optimal storage. Please minimize freeze-thaw cycles.

Background

The spike protein (S) of coronavirus (CoV) attaches the virus to its cellular receptor, angiotensin-converting enzyme 2 (ACE2). A defined receptor-binding domain (RBD) on S mediates this interaction. The S protein plays key parts in the induction of neutralizing-antibody and T-cell responses, as well as protective immunity.

Assay Data

Tris-Bis PAGE



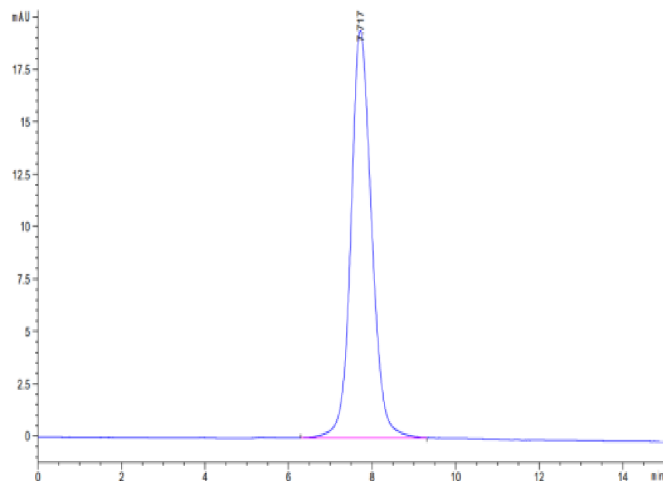
SARS-CoV-2 Spike S1 (Lambda C.37) on Tris-Bis PAGE under reduced condition. The purity is greater than 95%.

SEC-HPLC

SARS-CoV-2 Spike S1 (Lambda C.37) Protein

Cat. No. LCS-VM1S1

Assay Data

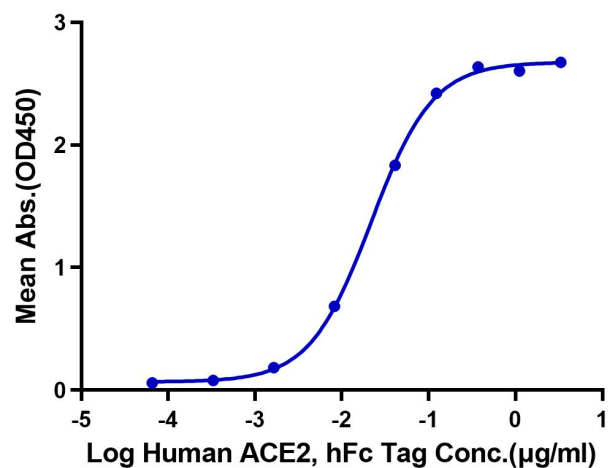


The purity of SARS-CoV-2 Spike S1 (Lambda C.37) is greater than 95% as determined by SEC-HPLC.

ELISA Data

SARS-CoV-2 Spike S1 (Lambda C.37), His Tag ELISA

0.2µg SARS-CoV-2 Spike S1 (Lambda C.37), His Tag Per Well



Immobilized SARS-CoV-2 Spike S1 (Lambda C.37), His Tag at 2µg/ml (100µl/well) on the plate. Dose response curve for Human ACE2, hFc Tag with the EC50 of 21.8ng/ml determined by ELISA.